

2013  
HYUNDAI

**ELANTRA**





**NOW THAT THE JURY HAS SPOKEN, THERE'S  
ONE MORE OPINION WE'D LIKE TO HEAR. YOURS.**



**HYUNDAI ELANTRA  
'2012 NORTH AMERICAN CAR OF THE YEAR'**

ELANTRA COUPE SE in Shimmering Air Silver / SEDAN LIMITED in Radiant Silver / GT TECH PACKAGE in Shimmering Air Silver



Last year, carmakers introduced dozens and dozens of new models in North America. And out of all those bright, shiny new cars, a panel of esteemed automotive journalists named one of them the 2012 North American Car of the Year: The Hyundai Elantra.

Fast forward a year, and you won't find Elantra resting on its laurels. It's very much on the move, with a new, fun-to-drive Elantra Coupe joining the lineup. Also new is the 2013 Elantra GT, Hyundai's innovative evolution of the five-door hatchback. And there's good news on fuel economy: The Elantra Sedan features an estimated

EPA rating of 38 MPG on the highway.<sup>1</sup> In fact, we planned Elantra specifically to meet the needs of the American driver. Its roomy interior is wrapped in fluidic sculpture styling that came from our Hyundai Design Studio in Irvine, California. We added America's Best Warranty to a long list of standard features. And topped it off with price points as appealing as the cars themselves.

The fact that we managed to make Elantra so appealing to the critics here in America might come as no surprise, either. But until we've been judged by you, we haven't heard the verdict that matters most.

<sup>1</sup>All EPA estimates for comparison only. Your actual mileage may vary with options, driving conditions, driving habits and the vehicle's condition.

## THE NEW ELANTRA COUPE: TWO FEWER DOORS. MANY MORE STARES.

Coupes are designed to attract attention. With our all-new Elantra Coupe, all eyes are drawn to its signature hexagonal grille with piano black accents. Not to mention the sculpted hood creases, fluidic character lines, rear spoiler and 17-inch alloy wheels under flared wheel arches that give every indication Elantra Coupe is ready for some serious driving fun.

And rest assured, it's not just show. Elantra Coupe delivers responsive performance, thanks in part to its strict adherence to a Hyundai engineering dictate: Keep the weight down...and watch the performance go up.

Gear heads call it power-to-weight ratio. And in Elantra Coupe SE, it has created an inherent balance that's allowed our engineers to tune the suspension and steering for added responsiveness and control. Now check the specs: Elantra Coupe is so spacious inside, it's bumped up to the next interior size category.<sup>1</sup> It's premium real estate accentuated by heated front sport seats, and available with dual automatic temperature control, navigation with a rearview camera, proximity key with push-button start, and premium audio with an external amp. Who says an affordable coupe can't be well-appointed?

<sup>1</sup> www.epa.gov.



ELANTRA COUPE SE in Volcanic Red





## LIVE LARGER.

“Without a doubt, the Hyundai Elantra is one of the best compact sedans you can buy today.” – *MotorTrend.com*, December 2011



ELANTRA SEDAN LIMITED in Black Leather



ELANTRA GT TECH PACKAGE in Black Leather



## PREMIUM FEATURES. NOW FOUND WITH MINIMAL EFFORT.

Look at the Elantra interiors. The quality of fit and finish. The level of technology found inside each 2013 model. If you're pleasantly surprised by a "class-above" midsize rating from the U.S. EPA, you're not alone.<sup>1</sup> Elantra has benefited from everything Hyundai has learned building luxury performance cars like Genesis and Equus. So go ahead – sit behind the wheel and push the button that electronically starts your Elantra.<sup>2</sup> Slide open the optional sunroof and watch as the available navigation system with rearview camera comes to life, and to your aid. Listen as the available Bluetooth® hands-free phone system responds to your voice.<sup>3</sup> And be sure to ask your passengers in back how they like the heated rear seats that come standard on our Limited model. Just be prepared for a chorus of oohs and ahhs.



### HEATED REAR SEATS

Elantra Limited is the first car in its class to offer heated rear seats. Gives you the warm fuzzies just thinking about it. Of course, its expertly stitched leather seating surfaces are heated up front as well.



### AUTO CLIMATE CONTROLS

You'll acclimate quickly to the Elantra's spacious interior, thanks to features that include an automatic defogging function and available dual automatic temperature control with a CleanAir Ionizer.



### ADVANCED NAVIGATION

Seldom has so much technology been found at such an affordable price. Available features include advanced navigation with SiriusXM® data services like NavTraffic,® NavWeather,® XM Sports Ticker® and XM Stock Ticker.® The 7-inch touchscreen also displays images from an available rearview camera.<sup>4</sup>



### PLUG AND PLAY

Fill the cabin with sonic delights from the 172-Watt AM/FM/SiriusXM®/CD/MP3 audio system, or an available 360-Watt premium audio system with 6 speakers and external amp. iPod®/USB and auxiliary input jacks let you plug in and search your playlists using the car's controls, with a visual display of the artist and title.<sup>5</sup>



### BLUETOOTH INTERFACE

Elantra's available built-in microphone and speakers deliver exceptional Bluetooth® hands-free phone clarity. Voice recognition and audio streaming are also available with compatible mobile phones.



### PROXIMITY KEY

No need to fetch keys from your pocket or purse – Elantra's available proximity key senses your presence, allowing you to unlock doors and start the engine with the push of a button.



<sup>1</sup> www.epa.gov. <sup>2</sup> Proximity key optional on Elantra SE, Elantra Limited and Elantra GT Tech/Touch & Go packages. <sup>3</sup> The Bluetooth® wordmark and logos are registered trademarks owned by Bluetooth SIG, Inc., and any use of such marks by Hyundai is under license. Other trademarks are those of their respective owners. <sup>4</sup> SiriusXM® Satellite Radio and NavTraffic® services require a SiriusXM subscription, sold separately after a complimentary introductory period. All fees and programming are subject to change. Traffic and weather channels only available in select markets, and SiriusXM service is only available in the 48 contiguous United States. See your dealer for details. Sirius, XM and all related marks and logos are trademarks of SiriusXM Radio Inc. All other trademarks are property of their respective owners. <sup>5</sup> iPod® is a registered trademark of Apple Inc.



**148** HORSEPOWER

ELANTRA COUPE SE in Titanium Gray Metallic

# TURNS POWER-TO-WEIGHT INTO POWER TO BURN.

To build a car worthy of the accolades bestowed upon our Elantra sedan, you start from the ground up and engineer it to achieve an impressive power-to-weight ratio. You forge a high-strength, lightweight steel unibody that is 37% more rigid and 62 pounds lighter than the previous model. Next, you add a suspension tuned to translate that rigidity into responsive handling. And sculpt a shape that cheats the wind (and gas stations) with a 0.28 coefficient of drag. You give its all-aluminum engine advanced technologies like Dual Continuously Variable Valve Timing, which helps it achieve an EPA-estimated 38 MPG highway with manual transmission through improved engine performance that makes the most of its 148 horsepower. All of which certainly makes Elantra worthy of something else: A test drive.



## CHOOSE YOUR TRANSMISSION

A 6-speed manual transmission is standard on GLS. There's also an available 6-speed automatic with an overdrive lock-up torque converter for higher fuel economy at freeway speeds. Want the control of a manual with the convenience of an automatic? Consider SHIFTRONIC® with manual shift mode.<sup>1</sup>



## FUEL SAVINGS

Along with the improved performance and efficiencies of modern engine and transmission design, Hyundai engineers achieved an EPA-estimated fuel efficiency rating of up to 38 MPG highway by reducing both the weight and aerodynamic drag of the car's body.



## ALL-NEW DRIVER SELECTABLE STEERING

Drivers can adapt the Elantra GT to one of three steering modes: Comfort, Normal or Sport. Comfort offers the greatest ease of steering, ideal for city and parking environments. Sport is optimized for higher-speed freeways or winding roads, while Normal is ideal for a mix of driving conditions.



## A CLEAN MACHINE

Automatic transmission Elantra models are classified by the U.S. Environmental Protection Agency as ULEV - that's short for Ultra-Low Emissions Vehicle. It also satisfies the stringent requirements of the state of California's Air Resources Board as a PZEV, or Partial Zero Emissions Vehicle.



## ELANTRA SUSPENSION

While Elantra Sedan's suspension is tuned for ride comfort, Elantra Coupe and GT take it a step further by tuning the handling for added responsiveness. The Elantra Coupe SE and GT Touch & Go and Style packages offer sportier suspension calibration for low-profile tires.



## ACTIVE ECO SYSTEM

At the press of a button on the dashboard, Elantra's Active ECO System modifies engine and transmission controls to smooth out shift points and help optimize fuel economy. With prices at the pump being what they are, every drop counts.



<sup>1</sup> Available on GLS and standard on Limited.



**119.1** CUBIC FEET  
INTERIOR VOLUME

<sup>1</sup>Elantra GT with manual transmission. <sup>2</sup>Blue Link<sup>®</sup> subscription service agreement required. Features vary by subscription plan. Blue Link service works using CDMA based cellular networks in the 50 United States. Blue Link service is not available where there is no cellular coverage particularly in enclosed or remote areas. Service availability may be affected by signal strength, foliage, weather, topographical conditions (mountains) and nearby structures (tall buildings, tunnels) and other factors. For details and system limitations visit [HyundaiBlueLink.com](http://HyundaiBlueLink.com). Blue Link is a registered trademark of Hyundai Motor Company. All rights reserved. ©2012 Hyundai Motor America. <sup>3</sup>Comparisons vs. 2012 competitive models. <sup>4</sup>Available with Elantra GT Style, Tech and Touch & Go option packages.

## THE NEW ELANTRA GT: 5-DOORS. MORE FUN.

You don't call your new car a "GT" without some justification. After all, it's a name car makers usually reserve for performance models with an extra measure of roominess. Our new Elantra GT does that, and more.

With its rear roof spoiler, unique grille and chrome beltline accents, Elantra GT looks the part. And its performance credentials are legit. Hyundai focused on creating an advanced steel formula that's lighter, yet stronger. The result? At just 2,745 pounds, Elantra GT is among the lightest five-door hatchbacks in its segment.<sup>1</sup> The stiff chassis and impressive power-to-weight ratio mean its sport-tuned suspension delivers quick reflexes and precise handling. At the same time, a weight-efficient unibody architecture allows Elantra GT to achieve an EPA-estimated 37 MPG highway.

It's light, but not stripped: Elantra GT is available with features like an available panoramic sunroof and rearview camera that tilts up the tailgate when reversing to reveal a hidden camera. And it comes standard with Blue Link,<sup>®</sup> Hyundai's advanced telematics system that links you to travel information via wireless connectivity.<sup>2</sup> An optional Touch & Go package adds even more luxurious amenities and performance enhancements.

What about roominess, you ask? Elantra GT has more interior volume than Toyota Matrix, Mazda3, Ford Focus and VW Golf. It even has more cargo capacity than the Nissan Juke crossover.<sup>3</sup> And with fold-flat rear seats and an available under-floor storage compartment,<sup>4</sup> it's enough cargo space to maximize your road trips.





ELANTRA SEDAN LIMITED in Radiant Silver

## ADVANCED SAFETY FEATURES NO LONGER REQUIRE ELEVATED INCOMES.

Everywhere you look, the 2013 Elantra reveals its highest priority – your safety. Those front headlamps? They incorporate daytime running lights, standard. That brake pedal under your foot? It activates the stopping power of standard 4-wheel disc brakes – a significant upgrade over competitors who still use drum brakes. The cabin around you? Six airbags stand ready to deploy in the event of a collision. It's all evidence of a simple truth: Safety engineering of the highest caliber is standard on some of the most affordable Hyundai models.



### DYNAMIC BRAKING

An Anti-lock Brake System with Brake Assist helps maintain vehicle control during emergency braking. Electronic Brake-force Distribution progressively maintains optimal brake pressure at all four corners for even more quick-stop stability. Together with 4-wheel disc brakes, stopping power is swift and sure.



### VEHICLE STABILITY MANAGEMENT

VSM offers steering force assistance for improved acceleration and braking on asymmetric roads, and integrates standard Electronic Stability Control and Traction Control Systems to keep your car riveted to the road. And heading in the right direction.<sup>1</sup>



### AIRBAG SAFETY SYSTEM

Elantra's dual front airbags, front seat-mounted side airbags and roof-mounted side-curtain airbags provide cocoon-like safety at every seating position.<sup>2</sup> According to the Insurance Institute for Highway Safety, this combination of airbags can reduce fatalities by up to 45%.



### HYUNDAI BLUE LINK®

Elantra GT comes standard with Blue Link, which connects you to core safety services like Automatic Collision Notification and Assistance, SOS Emergency Assistance, and Enhanced Roadside Assistance. After a free introductory period, owners can choose to extend these and other services as desired.<sup>4</sup>



### TIRE PRESSURE MONITORING SYSTEM

Each wheel is equipped with an air pressure sensor. In the event any tire reaches critically low air pressure, a warning light on the instrument panel alerts you.<sup>3</sup>



### KNEE AIRBAG

As part of Hyundai's advanced Supplemental Restraint System, Elantra GT comes standard with a seven airbag safety system which includes a driver's knee airbag.



<sup>1</sup>Electronic Stability Control (ESC) cannot control your vehicle's stability under all driving situations. ESC is not a substitute for safe driving practices. No system, no matter how advanced, can overcome physics or correct poor driving. The driver is always responsible for controlling the vehicle and must use caution to avoid loss of control in all driving conditions. Speed, road conditions and driver steering input will affect whether ESC can help prevent loss of control. See Owner's Manual for details. The Traction Control System is meant to enhance conscientious driving habits and is not a substitute for safe driving practices. <sup>2</sup>The Supplemental Restraint System (SRS) is designed to work with the 3-point seatbelt system. The SRS deploys in certain frontal and/or side-impact conditions where significant injury is likely. The SRS is not a substitute for seatbelts, which should be worn at all times. Children under the age of 13 should be restrained securely in the rear seat. NEVER place a rear-facing child seat in the front seat of a vehicle that has a passenger-side airbag. <sup>3</sup>TPMS is not a substitute for proper maintenance. See Owner's Manual for details. Spare tires are not equipped with TPMS. <sup>4</sup>Blue Link agents will contact existing emergency service responders. Only use Blue Link and corresponding devices when it is safe to do so.

## ELANTRA SEDAN GLS



### KEY STANDARD EQUIPMENT:

- 148 HP, 1.8L DOHC 4-cylinder engine with Dual Continuously Variable Valve Timing
- 6-speed manual transmission
- Available 6-speed automatic transmission with SHIFTRONIC® & Active ECO System
- Motor Driven Power Steering
- GLS Sedan Interior Features  
*Remote keyless entry system, power door locks & windows with driver auto-down*  
*Cloth interior with 6-way adjustable driver seat including height adjustment*  
*Air conditioning & solar glass with windshield shade band*  
*Tilt-and-telescopic steering wheel*  
*172-Watt AM/FM/SiriusXM®/CD/MP3 audio system with 6 speakers*  
*iPod®/USB auxiliary input jacks*

- Cruise control (A/T only)*
- Center console with storage compartment & armrest*
- 60/40 split fold-down rear seatback & rear-seat center armrest with cupholders*
- GLS Sedan Safety Features  
*6-airbag safety system with advanced dual front airbags & Occupant Classification System*  
*Vehicle Stability Management System*  
*Electronic Stability Control with Traction Control System*  
*4-wheel disc Anti-lock Braking System with Brake Assist & Electronic Brake-force Distribution*  
*Active front head restraints*  
*Tire Pressure Monitoring System*
- Headlight welcome function
- Dual power heated side mirrors
- 16" alloy wheels

### PREFERRED EQUIPMENT PACKAGE

Requires GLS A/T Standard Equipment:

- + Heated front seats
- + Steering wheel audio controls
- + Bluetooth® hands-free phone system with voice recognition & wireless streaming audio
- + Cloth insert door trim
- + Sliding center armrest
- + Illuminated vanity mirrors with extensions
- + Illuminated ignition
- + Front fog lights

### EXTERIOR DIMENSIONS

|   | SEDAN       | COUPE       | GT          |
|---|-------------|-------------|-------------|
| Wheelbase (in)                          | 106.3       | 106.3       | 104.3       |
| Overall Length (in)                     | 178.3       | 178.7       | 169.3       |
| Overall Width (in), excluding mirrors   | 69.9        | 69.9        | 70.1        |
| Overall Height (in)                     | 56.5        | 56.5        | 57.9        |
| Tread Width (in), front/rear 16" wheels | 61.0 / 61.5 | 61.0 / 61.5 | 61.0 / 61.5 |
| Tread Width (in), front/rear 17" wheels | 61.1 / 61.6 | 61.1 / 61.6 | 61.0 / 61.5 |
| Coefficient of Drag (Cd)                | 0.28        | 0.28        | 0.3         |
| Base Curb Weight (lbs, M/T)             | 2,661-2,820 | 2,687-2,835 | 2,745-2,919 |
| Base Curb Weight (lbs, A/T)             | 2,701-2,877 | 2,729-2,877 | 2,784-2,959 |

## ELANTRA SEDAN LIMITED



### GLS PREFERRED EQUIPMENT PACKAGE PLUS:

- + Power tilt-and-slide glass sunroof with sunshade
- + Limited rear badge
- + Leather-wrapped steering wheel & shift knob
- + Heated front & rear leather seats
- + One-touch driver auto-up window
- + Black chrome grille accents
- + Power side mirrors with integrated turn signal indicators
- + 17" Euroflange alloy wheels
- + Power 6-way adjustable driver seat with lumbar support

### TECHNOLOGY PACKAGE

- + Navigation system with 7" touchscreen & rearview camera
- + 360-Watt premium audio with digital external amp
- + Proximity key entry with push-button start
- + Dual automatic temperature control
- + Automatic headlights

### INTERIOR DIMENSIONS

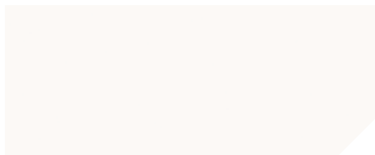
|                                       | SEDAN       | COUPE       | GT          |
|---------------------------------------|-------------|-------------|-------------|
| Head Room (in), front/rear            | 40.0 / 37.1 | 39.8 / 37.1 | 40.1 / 37.9 |
| Leg Room (in), front/rear             | 43.6 / 33.1 | 43.6 / 33.3 | 42.0 / 34.6 |
| Shoulder Room (in), front/rear        | 55.9 / 54.8 | 55.9 / 54.5 | 55.9 / 54.9 |
| Hip Room (in), front/rear             | 53.5 / 52.7 | 52.8 / 53.1 | 53.1 / 51.0 |
| Passenger Volume (cu ft)              | 95.6        | 95.4        | 96.1        |
| Cargo Volume (cu ft)                  | 14.8        | 14.8        | 23          |
| Cargo Volume (cu ft), rear seats down | -           | -           | 51          |
| Total Interior Volume (cu ft)         | 110.4       | 110.2       | 119.1       |

### EPA MILEAGE ESTIMATES

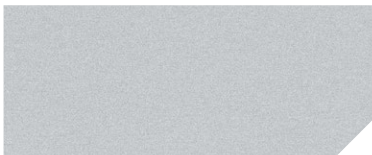
|  | SEDAN        | COUPE        | GT           |
|--|--------------|--------------|--------------|
| Automatic Transmission (city/highway/combined) | 28 / 38 / 32 | 27 / 37 / 31 | 27 / 37 / 30 |
| Manual Transmission (city/highway/combined)    | 28 / 38 / 32 | 28 / 38 / 32 | 26 / 37 / 30 |
| Fuel Tank Capacity (gal)                       | 12.8         | 13.2         | 13.2         |



2013 ELANTRA SEDAN **EXTERIOR COLORS**



MONACO WHITE



RADIANT SILVER / SHIMMERING AIR SILVER



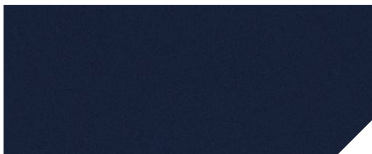
BLUE SKY METALLIC



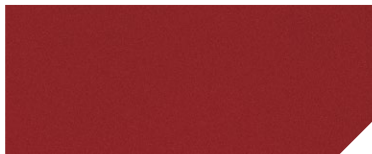
DESERT BRONZE



TITANIUM / HARBOR GRAY METALLIC



INDIGO NIGHT / ATLANTIC BLUE



RED ALLURE / SPARKLING RUBY

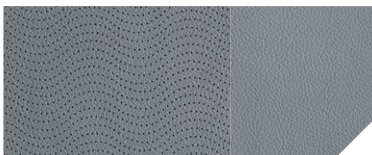


MIDNIGHT BLACK / BLACK DIAMOND

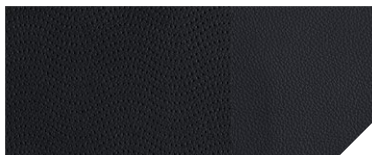
2013 ELANTRA SEDAN **INTERIOR COLORS**



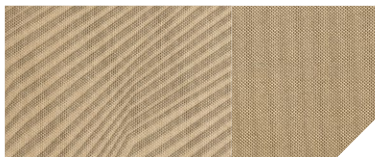
BEIGE LEATHER



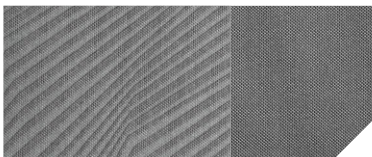
GRAY LEATHER



BLACK LEATHER



BEIGE CLOTH



GRAY CLOTH

2013 ELANTRA SEDAN **WHEELS**



16" ALUMINUM ALLOY WHEEL



17" ALUMINUM ALLOY WHEEL

2013 ELANTRA COUPE **WHEELS**



16" ALUMINUM ALLOY WHEEL



17" ALUMINUM ALLOY WHEEL

2013 ELANTRA GT **WHEELS**



16" ALUMINUM ALLOY WHEEL



17" ALUMINUM ALLOY WHEEL

**AMERICA'S BEST WARRANTY**

POWERTRAIN LIMITED WARRANTY

**10 YEARS**  
100,000 MILES

NEW VEHICLE LIMITED WARRANTY

**5 YEARS**  
60,000 MILES

ANTI-PERFORATION WARRANTY

**7 YEARS**  
UNLIMITED MILES

24-HOUR ROADSIDE ASSISTANCE

**5 YEARS**  
UNLIMITED MILES

See dealer for LIMITED WARRANTY details



**Assurance**

For more than a decade, Hyundai has backed every car we've built with America's Best Warranty and this simple promise: Relax. We've got your back for the next 10 years or 100,000 miles. It's a commitment to customers that's evolved into Hyundai Assurance, an umbrella of services that includes 24/7 Roadside Assistance and more. Visit [hyundaiassurance.com](http://hyundaiassurance.com) for details.

## 2013 ELANTRA COUPE LINEUP

### ELANTRA COUPE GS



#### KEY STANDARD EQUIPMENT:

- 148-HP, 1.8L DOHC 4-cylinder engine with Dual Continuously Variable Valve Timing
- 6-speed manual or available automatic transmission with SHIFTRONIC® & Active ECO System
- GLS Sedan Interior Features
- Bluetooth® hands-free phone system with voice recognition & audio streaming
- Heated front seats & cloth insert door trim
- Tilt-and-telescopic steering wheel with cruise, audio & phone controls
- Two-level center console storage compartment & sliding center armrest
- GLS Sedan Safety Features
- Front fog lights, daytime running lights & bodycolor front grille
- 16" alloy wheels & dual chrome exhaust tips

### ELANTRA COUPE SE



#### GS STANDARD EQUIPMENT PLUS:

- + Sport-tuned suspension
- + Leather seats, steering wheel & shift knob
- + Aluminum sport pedals
- + One-touch driver auto-up window
- + Power tilt-and-slide glass sunroof

#### TECHNOLOGY PACKAGE

- + Navigation system with 7" touchscreen & rearview camera
- + Automatic headlights

- + Side mirror turn signal indicators
- + Integrated rear spoiler & piano black front grille
- + Unique grille & hood insulator
- + Rear spoiler
- + 17" alloy wheels

- + Proximity key entry with electronic push-button start
- + 360-Watt premium audio with digital external amp
- + Dual automatic temperature control

## 2013 ELANTRA GT LINEUP

### ELANTRA GT 5-DOOR



#### KEY STANDARD EQUIPMENT:

- 148 HP, 1.8L DOHC 4-cylinder engine with Dual Continuously Variable Valve Timing
- 6-speed manual or automatic transmission with SHIFTRONIC® & Active ECO System
- Motor Driven Power Steering with Driver Selectable Steering Mode
- GLS Sedan Interior Features with metallic interior accents
- Heated front seats, rear seatback pockets & cloth insert door trim
- Air conditioning with glovebox cooling
- Tilt-and-telescopic steering wheel with cruise, audio & phone controls
- Blue Link® telematics & Bluetooth® hands-free phone system with voice recognition
- GLS Sedan Safety Features with 7-airbag safety system (includes driver knee airbag)
- Front fog lights & daytime running lights
- Chrome front grille accents, rear window wiper & integrated spoiler
- 16" alloy wheels

### ELANTRA GT TOUCH & GO



#### GT STANDARD EQUIPMENT PLUS:

- + Sport-tuned suspension
- + Proximity key entry with push-button start
- + Leather-wrapped steering wheel and shift knob
- + Aluminum sport pedals
- + One-touch driver auto-up window
- + Underfloor storage compartment
- + 17" alloy wheels

### ELANTRA GT STYLE



#### GT STANDARD EQUIPMENT PLUS:

- + Sport-tuned suspension
- + Leather seating surfaces
- + Leather-wrapped steering wheel and shift knob
- + Power driver seat with lumbar support
- + Aluminum sport pedals
- + Panoramic tilt-and-slide sunroof
- + Integrated side mirror turn signal indicators
- + One-touch driver auto-up window
- + Underfloor storage
- + 17" alloy wheels

### ELANTRA GT TECH

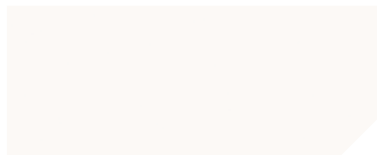


#### REQUIRES GT STYLE PACKAGE:

- + Proximity key entry with push-button start
- + 360-Watt AM/FM/SiriusXM®/CD/MP3 premium audio system with 6 speakers
- + Navigation system with 7" touchscreen & rearview camera
- + Dual automatic temperature control with automatic defogging system
- + Automatic headlights

2013 ELANTRA COUPE & GT **EXTERIOR COLORS**

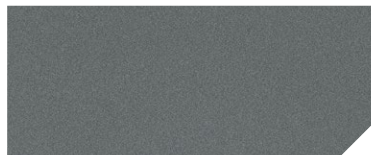
\*COLORS ONLY AVAILABLE ON ELANTRA COUPE MODELS



MONACO WHITE



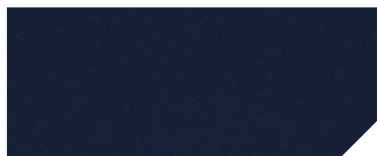
SHIMMERING AIR SILVER



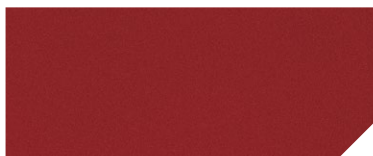
TITANIUM GRAY METALLIC



BLUE SKY METALLIC\*



ATLANTIC BLUE

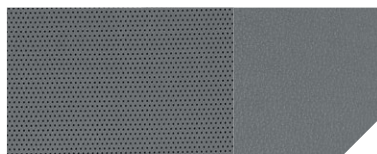


VOLCANIC RED



BLACK NOIR PEARL

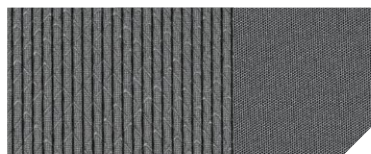
2013 ELANTRA COUPE **INTERIOR COLORS**



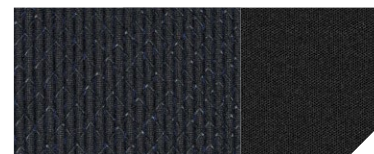
GRAY LEATHER



BLACK LEATHER



GRAY CLOTH



BLACK CLOTH

2013 ELANTRA GT **INTERIOR COLORS**



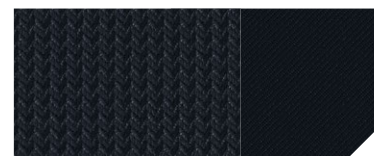
BEIGE LEATHER



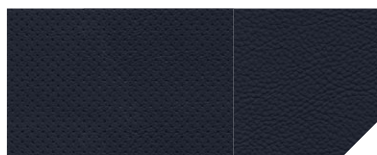
BLACK LEATHER



BEIGE CLOTH



BLACK CLOTH



BLUE LEATHER

Fuel economy estimated by EPA for comparison only. Mileage may vary. While the information contained in this brochure was correct at the time of printing, specifications and equipment can change. Feature comparisons based on competitor information available at the time of printing. No warranty or guarantee is being extended in this brochure, and Hyundai reserves the right to change product specifications and equipment at any time without incurring obligations. Some vehicles are shown with optional equipment. Specifications apply to U.S. vehicles only. Please contact your Hyundai dealer for current vehicle specifications. As part of Hyundai's commitment to a responsible environment, this brochure is printed using paper certified by the Forest Stewardship Council™. FSC® certification helps ensure that the highest social and environmental standards are met in the making of the paper we use, contributing to conservation, responsible management, and community-level benefits for people near the forests.



 **HYUNDAI** | NEW THINKING.  
NEW POSSIBILITIES.

## HYUNDAI HOPE ON WHEELS

Hyundai dealers are helping preserve human life. Our Hope on Wheels program ensures a portion of the proceeds from every vehicle we sell is donated to help fund pediatric cancer research (over \$57 million in funding by the end of 2012). To learn more and help us find a cure, please visit [HyundaiHopeOnWheels.com](http://HyundaiHopeOnWheels.com).



**EXPLORE HYUNDAI.COM** | Be sure to visit our website, where you can build your own Elantra, locate a Hyundai dealer near you, and best of all – schedule a test drive.

**CONNECT WITH HYUNDAIUSA.COM/SOCIAL**



©2012 HYUNDAI NP02082013