

CATALINA



50th
ANNIVERSARY
SPECIAL EDITION
PRODUCT OFFER

CATALINA



Coachmen

Leader to the Great Outdoors.

"Coachmen RV... Great Product, Great Price, Great Value"



333BHKS Bunk room

333BHKS with Chipotle decor (Front to back view)

323BHDS

The Catalina 323BHDS is one of our top selling family floorplans. This slideout travel trailer floorplan sleeps 9-10 comfortably. Have a big family? This is the floorplan for you, the 323BHDS is available with an optional full size camp kitchen, it's a great way to feed the hungry troops and keep the mess outside.



323BHDS Full-Size Camp Kitchen (Also available on the 303KDS, 323TSBH, 333BHKS)



323BHDS with Bazinga Stone decor (Back to front view)

Shown with optional TV



323BHDS Bedroom with quilted comforter, two mirrored shirt closets, overhead cabinets and two night stands



Bunk house entertainment center and storage (TV not included)

293RKS

This is our entertainers floorplan, featuring a large kitchen with lots of cabinet storage and additional countertop space. Sofa seating as well as two swivel chairs offers plenty of living room comfort. The 293RKS is also one of our select floorplans that includes a Fireplace/Entertainment Center STANDARD.



293RKS Kitchen



Shown with optional TV

293RKS with Mahki decor (Back to front view)



Large bathroom featuring abundant storage

293QBCK

Catalina's 293QBCK is designed to sleep 7-9 comfortably, our pull out camp kitchen is **STANDARD** on this floorplan. The pull out camp kitchen includes a pull out countertop, mini fridge, camp stove and sink with hot and cold water.



Shown with optional TV

293QBCK with Cinnabar decor (Back to front view)



293QBCK Bunk room



Pull out camp kitchen (STANDARD on 293QBCK, 303BHCK
OPTIONAL on 273BH, 273DBS, 303FQB)



303RLS

The 303RLS is a rear living couples trailer. It has a unique layout that includes a more functional living room with the entertainment center closer to the seating. The corner kitchen design offers more countertop space than similar competitive floorplans. The side aisle storage offers a large pantry as well as additional wardrobes.



303RLS with Cinnabar decor (Back to front view)



Front to back



Kitchen



Side aisle storage

STANDARD AND OPTIONAL FEATURES

Exterior Standard Features

- **Cambered structural steel I-Beam frame (with full width out riggers)**
- **3/8" Fully decked walk-on roof**
- **Residential in-floor ducted heat (N/A- 213BH, 223FB, 273BH)**
- **One-piece seamless roof**
- **Radius entry steps**
- **5/8" Tongue & groove plywood floor decking**
- **R-7 fiberglass insulation in sidewalls, roof & floor**
- **Silver E-coat wheels**
- **G-20 tinted windows**
- **Rain gutters with molded downspouts**
- **.024" Aluminum exterior skin with .030 skirt metal**
- **Painted bumper w/drain hose carrier and end caps**
- **Radius-cornered fiberglass entrance door**
- **Roto-cast holding tanks**
- **Baggage doors are lockable and radius-cornered**
- **Polished aluminum fender skirts**
- **Self-adjusting brakes**
- **110V G.F.C.I. protected exterior receptacle**
- **30-Amp electrical service w/deluxe 110v 45-Amp power converter**
- **City water hook-up**

Interior Standard Features

- **Large pots & pans drawer**
- **Under-bed storage, bed lifts easily on 2 gas struts**
- **2 Shirt closets with mirrors**
- **Fireplace at the base of the entertainment center (STANDARD 243RBS, 293RKS, 303RLS, 323BHDS)**
- **STANDARD Fireplace at the base of the entertainment center and in the bedroom (333RETS only)**
- **AM/FM radio with CD player, iPod and MP3 dock**
- **Residential in-floor ducted heat (N/A- 213BH)**
- **Cable/TV hook-up in front bedroom (N/A- 213BH)**
- **81" Living room ceiling height**

- **2 full-length night stands w/ recepts**
- **Tile look linoleum flooring**
- **30K BTU auto-ignition furnace with wall thermostat (20K BTU 213BH)**
- **Grace Cherry wood grain cabinets**
- **12V demand water pump**
- **Decorative glass in living room cabinets**
- **Systems monitor panel**
- **Jack knife convertible sofa with bolster cushions**
- **Shower curtain with curved shower track**
- **Neo-angle shower with glass doors (STANDARD 243RBS, 253RKS, 263RLS, 293RKS, 303RLS, 333BHKS, 333RETS)**
- **Valance window treatment with mini blinds**
- **Large dinette tabletop with marine grade pedestal**
- **Marine toilet with foot flush**
- **Medicine cabinet w/ mirror**
- **Bathroom exhaust fan**
- **Single piece thermofoil countertop with seamless edge**
- **High rise faucet w/ large 60/40 double bowl sink**
- **Gas/electric double door refer**
- **3-Burner range w/ 9,000 BTU Superburner™**
- **Glued and screwed cabinet construction with solid lumber core stiles**
- **Easy-View extra large picture window at dinette**
- **Silverware drawer**
- **Solid bedroom and bunk room doors (per floorplan)**
- **Radius corner interior walls (where applicable)**

Customer Premier Package (Mandatory Option)

- **13.5K BTU A/C**
- **6 gallon gas/electric DSI water heater**
- **Metal drawer guides in kitchen**
- **Radial tires**
- **Superlube™ axles**
- **ABS tub/shower surround**
- **20lb. LP bottles w/ ABS cover**
- **Double door refer**
- **Decorative backsplash in kitchen**

- **Microwave**
- **Patio awning**
- **Aluminum fender skirts**
- **Quilted Bedspread**
- **Stab jacks (4)**
- **Water heater by-pass winterization kit**
- **Winegard™ TV antenna with RG-6 coax cabling and satellite prep**

Additional Options

- **Power pack (power awning & power tongue jack)**
- **26" flat screen TV**
- **Enclosed and heated underbelly (NA - 213BH, 223FB, 273BH)**
- **13.5K BTU ducted A/C**
- **15K BTU ducted A/C**
- **Multi Media Sound System with CD/DVD player, iPod and MP3 docking**
- **Swing arm TV bracket**
- **50 Amp service with second 13.5K A/C prep**
- **Free standing table w/ 4 chairs (OPTIONAL 243RBS, 263RLS, 293RKS, 303RLS) (STANDARD 333RETS)**
- **Range with oven IPO 3 burner cooktop**
- **Hide-a-bed sofa (N/A- 213BH, 223FB, 253RKS, 273BH, 303FQB, 333BHKS)**
- **Kitchen sink covers**
- **Outside shower**
- **Bar stools (243RBS, 293DDS)**
- **Skylight above tub/shower**
- **Spare tire w/tire carrier & cover**
- **Outside marine-grade speaker**
- **Full size exterior camp kitchen (303KDS, 323BHDS, 333BHKS)(STD 323TSBH)**
- **Pull out camp kitchen (273BH, 273DBS, 303FQB) (STANDARD 293QBCK, 303BHCK)**
- **Front diamond plate (mandatory)**
- **Full wall w/pocket door (Available on 223BH, 273BH)**
- **Two (2) 30 Lbs. LP tanks with ABS cover**



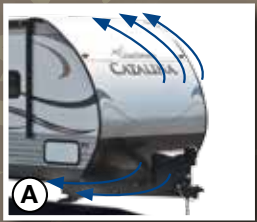
323BHDS with Bazinga Stone decor (Back to front view)

Shown with optional TV

- 1. Thermofoil countertops (not T-mold or self edge)
- 2. High rise faucet with 60/40 sink
- 3. Three burner range (oven optional)
- 4. Full extension ball bearing metal drawer guides
- 5. In-floor ducted heat (N/A 213BH)
- 6. Grace Cherry wood grain cabinetry
- 7. 81" Interior height
- 8. Fireplace (STANDARD 243RBS, 293RKS, 303RLS, 323BHDS)
- 9. Decorative glass inserts on cabinet fronts
- 10. Roof ducted A/C (optional)
- 11. Venetian style mini blinds
- 12. Tile look linoleum with 3 yr. cold crack warranty
- 13. Matching wood grain refer inserts
- 14. Under booth dinette storage (per floorplan)
- 15. AM/FM/CD Radio MP3/iPod, (DVD player optional)
- 16. Dinette table on marine grade pedestal base
- 17. Overhead cabinet storage with gas strut lift assist
- 18. Residential style carpet
- 19. High rise radius corner cushion on u-shape dinettes
- 20. Sofa bolsters
- 21. Solid bedroom privacy door (most floorplans)



Certified Green
Builder by TR Arnold
and Associates.



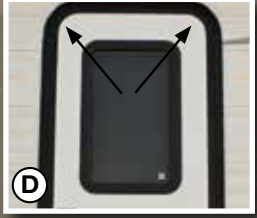
A
Full radius smooth metal front end
for improved airflow



B
Exterior pass thru storage



C
Radius triple entry step
(Double non slide models)



D
Smooth fiberglass radius
entry door



E
Four (4) stabilizer jacks
Standard on all models
(Most competitors offer this as an
option not a standard)



One piece, seamless
roof with 12 year
warranty

R-7 Eco-Batt
Insulation

13.5K BTU
Air Conditioner

3/8" Roof Decking
(Full Walk-On)

5" Bowed Truss
Roof Rafters

H

J

C

D

E

F

G

I

C

B

Floor Studs
12"-16" on Center

Tile
Look Linoleum

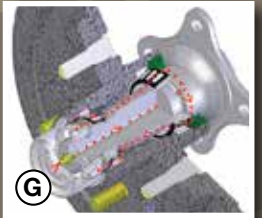
I-Beam
Frame with
Full Outriggers

Sewer Hose Integrated
into the Rear Bumper

.024 Aluminum
Siding



F
Catalina's exclusive tire and rim package
includes: radial tires, polished aluminum
fender skirts and e-coat rims



G
Superlube™ axles for fast
and easy lubrication



H
G20 rated tinted black framed
windows with safety glass



I
5/8" Tongue in groove plywood
floor decking-not osb



J
R-7 eco-batt insulation
is a new and sustainable
technology

CATALINA

Competition

Superior Benefits

In every Coachmen Catalina quality is evident. We go above and beyond to offer features and benefits designed with the traveling camper in mind. Our superior benefits are a combination of practical features and construction practices that give our customers a coach that will last. It's just another way Coachmen proves we are "The leader to the great outdoors".



Thermofoil Countertop Benefits:

- *Pull Test—It pulls at 450-500 PSI It will pull the MDF apart before the vinyl gives.*
- *Cold cracks-Will not cold crack like a T- mold Edge or Self-Edge.*
- *Moisture Exposure-It will withstand moisture better than T-mold Edge or Self-Edge because it is sealed so that no water can penetrate.*



Our full radius smooth metal front end creates a more aerodynamic unit resulting in:

- *Better airflow*
- *Improved fuel costs*
- *Better towability*
- *Easy to clean*





Our standard 6 gallon gas/electric DSI water heater allows you to fire up your water heater quickly and easily from inside your Catalina. It also features a great quick recovery feature which allows you to heat up to 18 gallons of hot water per hour. So whether you are washing the dishes or taking a shower, you'll always have plenty of hot water.

The floor is the base and key component of your RV. Therefore, we refuse to build anything but the best. Beginning with building the frame on 12"-16" centers, and bolting as well as gluing the 5/8" tongue and groove plywood, our methods and materials set us apart from the competition.



All of our craftsman are thoroughly trained to use a framing table with jigs and clamps. This ensures that the cabinets are built to extremely tight tolerances for tight and secure cabinetry that will last for years.



When checking for water leaks we pressurize the unit and then use a Seal-Tech spray on every part of the unit to identify any problem areas.

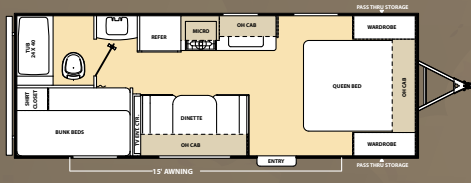


A pressurized LP line test ensures that your unit is safe and all LP gas components are in working order.

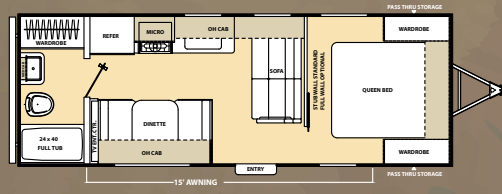


A thorough electrical check makes sure that all electrical components are in working order, and that no electrical connections have been compromised during construction.

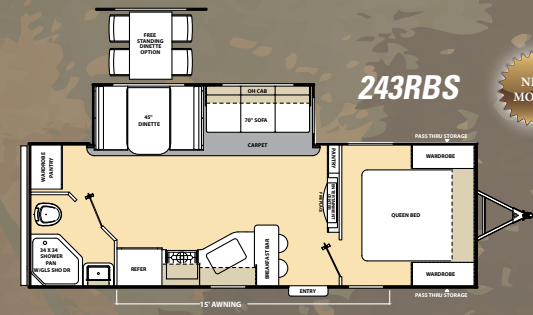
213BH



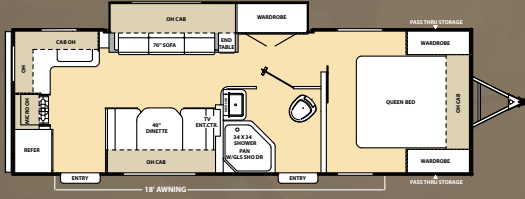
223FB



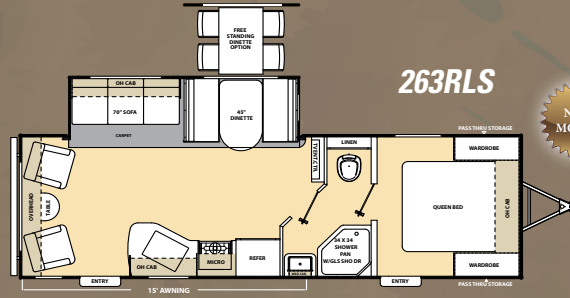
243RBS



253RKS



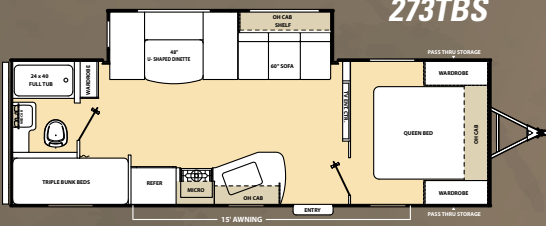
263RLS



273BH



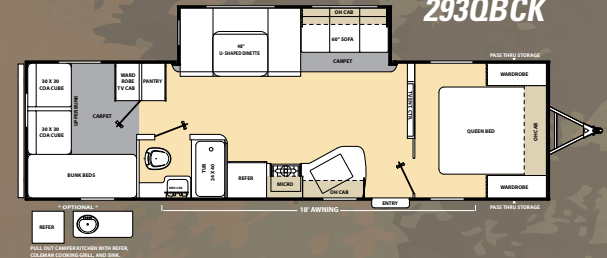
273TBS



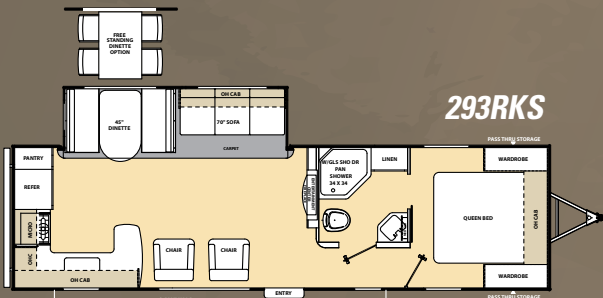
273DBS



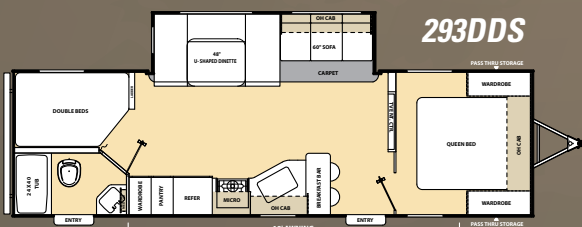
293QBCK



293RKS

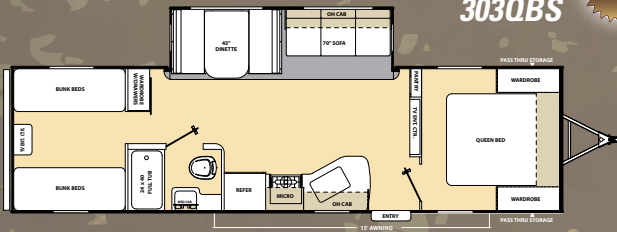


293DDS

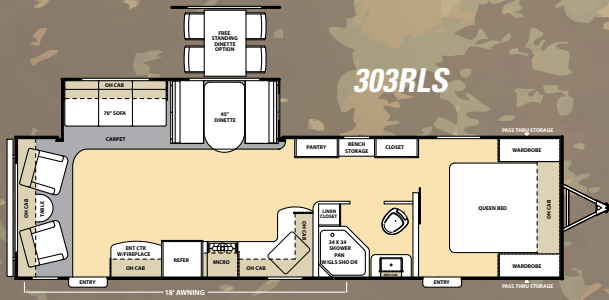


MODEL	213BH	223FB	243RBS	253RKS	263RLS	273BH	273TBS	273DBS	293QBCK	293RKS	293DDS
Shipping Weight	4,246	4,262	5,702	5,442	6,052	4,688	5,598	6,138	6,760	6,553	6,345
Carrying Capacity	2,754	2,738	1,898	2,058	1,648	2,312	2,002	1,562	2,740	2,647	1,455
GVWR	7,000	7,000	7,600	7,500	7,700	7,000	7,600	7,700	9,500	9,200	7,800
Hitch Weight	462	564	687	690	718	541	640	738	810	788	805
Exterior Height (with A/C)	10' 7"	10' 7"	11' 1"	10' 7"	11' 1"	10' 7"	10' 7"	11' 1"	11' 1"	11' 1"	11' 1"
Fresh Water Capacity (gal.)	46	46	46	46	46	46	46	46	46	46	46
Grey Water Capacity (gal.)	40	40	40	40	40	40	40	40	40	70	40
Waste Water Capacity (gal.)	30	30	30	30	30	30	30	30	30	30	30
Awning Length	15'	15'	15'	18'	15'	15'	15'	15'	18'	18'	18'
Wheel Size	14"	14"	15"	14"	15"	14"	14"	15"	15"	15"	15"
Exterior Length	25' 8"	26' 2"	27' 11"	28' 4"	29' 10"	29' 3"	29' 3"	30' 3"	33' 5"	32' 6"	31' 7"
Exterior Width	96"	96"	96"	96"	96"	96"	96"	96"	96"	96"	96"
Interior Height (Coach)	81"	81"	81"	81"	81"	81"	81"	81"	81"	81"	81"
Axles	3500 lbs.	3500 lbs.	3500 lbs.	3500 lbs.	3500 lbs.	3500 lbs.	3500 lbs.	3500 lbs.	4400 lbs.	4400 lbs.	3500 lbs.

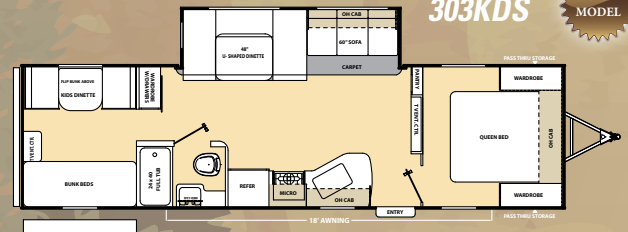
303QBS



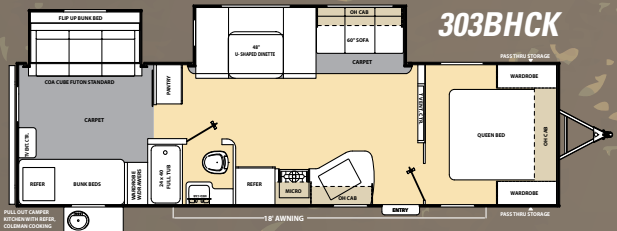
303RLS



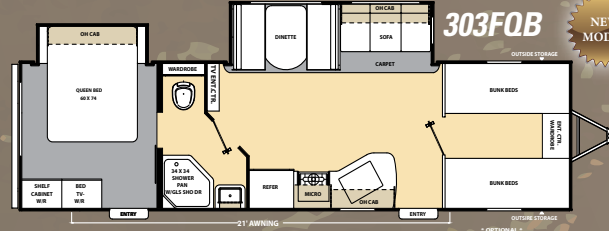
303KDS



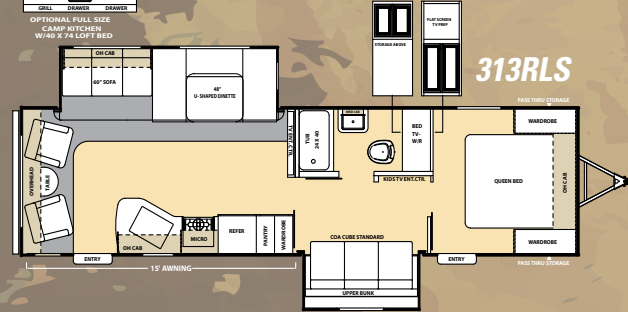
303BHCK



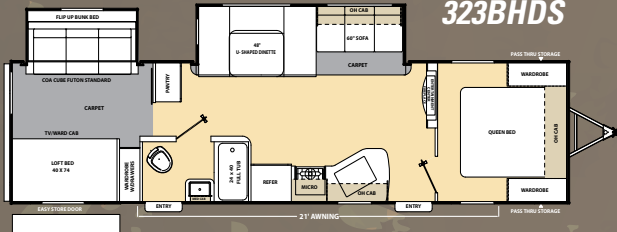
303FQB



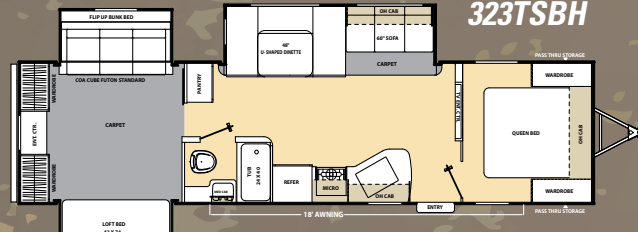
313RLS



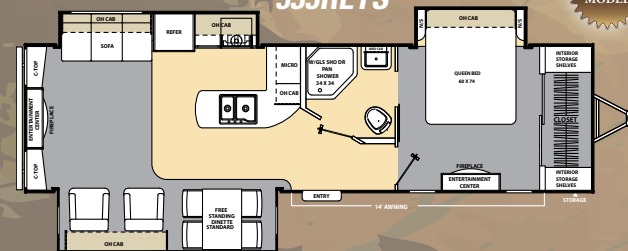
323BHDS



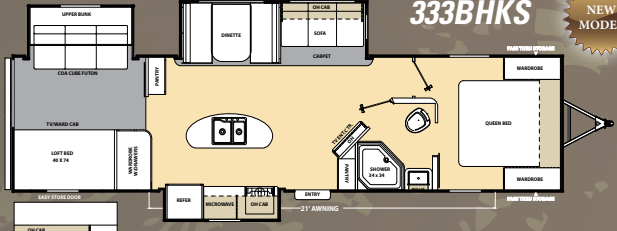
323TSBH



333RETS



333BHKS



MODEL	303QBS	303RLS	303KDS	303BHCK	303FQB	313RLS	323BHDS	323TSBH	333RETS	333BHKS
Shipping Weight	6,495	6,710	6,440	7,470	7,260	7,380	7,690	8,490	7,980	8,230
Carrying Capacity	2,505	2,790	2,560	1,971	2,240	2,320	1,810	2,410	2,520	2,570
GVWR	9,000	9,500	9,000	9,500	9,500	9,700	9,500	10,900	10,500	10,800
Hitch Weight	895	720	870	750	950	910	790	990	800	900
Exterior Height (with A/C)	11' 1"	11' 1"	11' 1"	11' 3"	11' 1"	11' 1"	11' 1"	11' 3"	11' 1"	11' 1"
Fresh Water Capacity (gal.)	46	46	46	46	46	46	46	46	46	46
Grey Water Capacity (gal.)	40	40	40 **	40	40	40	40 **	40	40	80 **
Waste Water Capacity (gal.)	30	30	30	30	30	30	30	30	30	30
Awning Length	18'	18'	18'	18'	21'	15'	21'	18'	14'	21'
Wheel Size	15"	15"	15"	15"	15"	15"	15"	15"	15"	15"
Exterior Length	33' 5"	33' 11"	33' 5"	34' 6"	33' 11"	34' 5"	35' 10"	36' 4"	35' 10"	36' 9"
Exterior Width	96"	96"	96"	96"	94"	96"	96"	96"	96"	96"
Interior Height (Coach)	81"	81"	81"	81"	81"	81"	81"	81"	81"	81"
Axles	4400 lbs.	4400 lbs.	4400 lbs.	4400 lbs.	4400 lbs.	4400 lbs.	4400 lbs.	5000 lbs.	5000 lbs.	5000 lbs.

**110 with camp kitchen

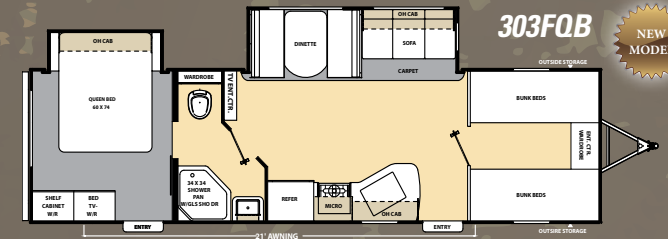
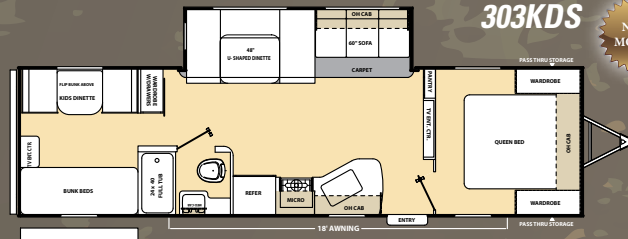
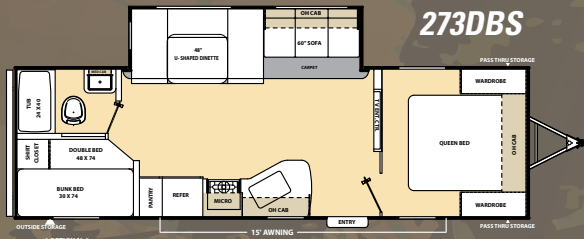
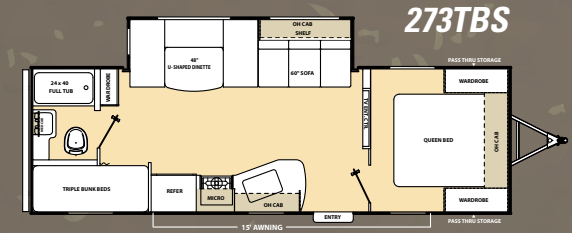
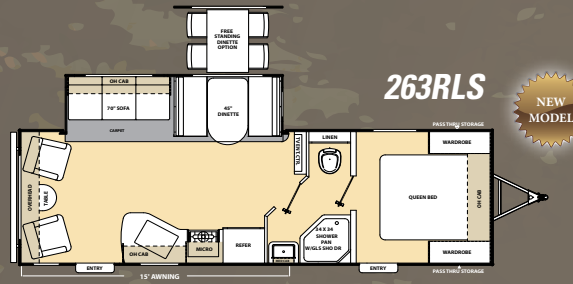
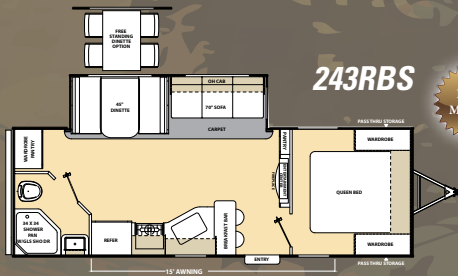
CATALINA



A Proud History of Quality and Value..... A Brand That You Can Trust!

Coachmen RV products have been on the US roads and highways since 1964. The first Coachmen RV products were manufactured in a 5,000 square foot plant in downtown Middlebury, Indiana. Coachmen's first year of production included 12 travel trailers, a single truck camper, and 80 truck caps. Since that time, over 600,000 Coachmen Recreational Vehicles have been produced.

The release of the 2014 Model Year Product marks the 50th Anniversary for Coachmen RV. This milestone celebrates our company history and YOU, the RV Camper. We recognize that we could not have enjoyed 50 years of business without our loyal customers!! As a token of our appreciation, Coachmen Catalina is proud to introduce the 50th Anniversary Edition Travel Trailer in Seven Select Floorplans. We have combined all of our best options in to one **FREE** 50th Anniversary Package. (See Adjacent Page) We extend our gratitude to those who have already become a part of the Coachmen Family and warmly welcome those future campers who choose Coachmen products. Thank you for your business!



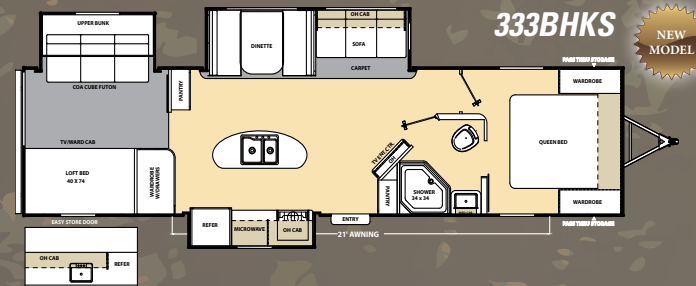
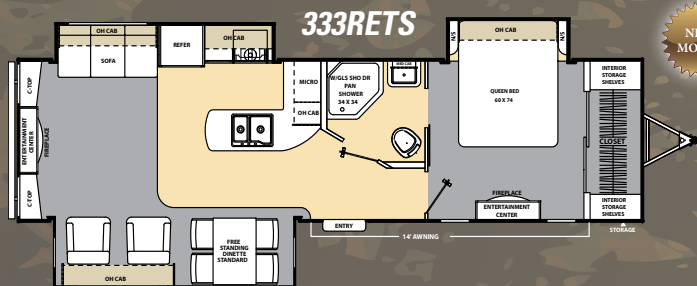
PULL OUT CAMPER KITCHEN WITH REFR, COLUMBIAN COOKING GRILL, AND SINK.



OPTIONAL FULL SIZE CAMP KITCHEN W/40 X 74 LOFT BED



PULL OUT CAMPER KITCHEN WITH REFR, COLUMBIAN COOKING GRILL, AND SINK.



OPTIONAL FULL SIZE CAMP KITCHEN W/40 X 74 LOFT BED

See Specification tables on previous pages for more information.



Also available with standard white exterior.

50th ANNIVERSARY PACKAGE

Qualifying units will be clearly marked with 50th Anniversary decals and a date of manufacture on or after September 25, 2013.



FREE

**Multi Media Sound System
w/ DVD and CD radio**



FREE

Swing Arm TV bracket



FREE

26" Flat Screen TV



FREE

**Marine Grade Exterior
Speaker**



FREE

Power Tongue Jack



FREE

Power Electric Awning



FREE

**Outside Shower with Hot and
Cold Controls**



FREE

Skylight Above Tub/Shower



FREE

**Front Diamond Plate
Stone Guard**



FREE

**Range with Oven IPO
3 Burner Cooktop**



FREE

TRA GOLD Certification



FREE ONE YEAR MEMBERSHIP

Big benefits for new owners

Coachmen is proud to sponsor the largest manufacturer sponsored camping club in North America ... Coachmen Owners' Association (COA). COA provides a broad breadth of value propositions for our owners including: planned trips/ tours and rallies at bulk rate discounts, free trip routing, free campground directory, free Easy RVing magazine, theme park discounts, fuel discounts, mail forwarding, a dedicated COA web site, local and state club activities and Caravan Chapter membership opportunities. Most importantly, COA enhances the Coachmen ownership and RV lifestyle experience. Every new Coachmen RV buyer is eligible for a 1 Year **FREE** membership in the Coachmen Owners' Association. It all adds up to an easy ownership experience!

Travel Easy™ Roadside Assistance

RVing is easier with Coachmen's Travel Easy™ Roadside Assistance provided **FREE** the first year of ownership to those who purchase a New Coachmen RV. Administered by Coach-Net, this service provides you with 24/7 operational, technical and emergency road service coverage. Also included is towing, fuel delivery, jump starts, lockout service, tire changes, mobile mechanic and unlimited technical assistance. Anywhere. Anytime. Travel Easy™ is the security of knowing that help is an easy phone call away.



All information contained in this brochure is believed to be accurate at the time of publication. However, during the model year, it may be necessary to make revisions and Coachmen reserves the right to make all such changes without notice, including prices, colors, materials, equipment and specifications as well as the addition of new models and the discontinuance of models shown in this brochure. Therefore, please consult with your Coachmen dealer and confirm the existence of any materials, design or specifications that are material to your purchase decision.

To learn more about Coachmen RV and our products and see how Coachmen is leading the great outdoors, visit www.coachmenrv.com



Coachmen

Leader to the Great Outdoors.

Coachmen RV
Catalina Division
423 N. Main St./P.O. Box 30
Middlebury, IN 46540



Learn More

Scan this barcode using a QR Reader on your smart phone to learn more about Forest River.



A Berkshire Hathaway company.



Forest River, Inc. encourages our customers to purchase their Forest River products from a local dealership whenever possible for the following reasons:

- 1) Forest River, Inc. dealers are independently owned and operated businesses so priority service and scheduling is at their discretion and is often provided to customers that purchased their unit at that dealership.
- 2) Purchasing locally allows customers to establish meaningful relationships with a dealer, enhancing the RV experience through assistance with product questions, user tips or RV regulations for your state or country, and much more!
- 3) Canadian customers must meet requirements to bring an RV purchased out of the country to their home. These requirements may involve additional inspections and certifications, taxes and fees. Your local Canadian Dealer is a professional at meeting these requirements.
- 4) Scheduling timely warranty repairs and adjustments through a local dealership provides far greater flexibility and convenience to you, the customer!

It is the goal of Forest River, Inc. that all of our RV owners fully enjoy the RV experience and that customer satisfaction meets or exceeds their expectations!

YOUR CATALINA DEALER

